

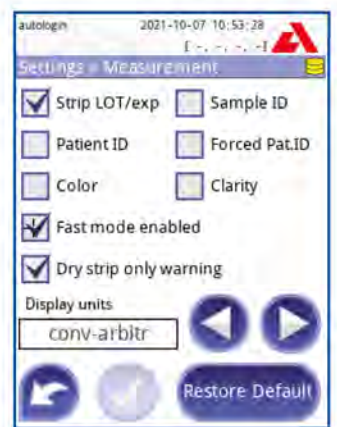
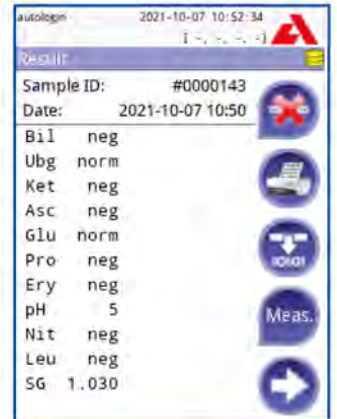
**A new way
in urinalysis**




- Easy-to-use
- Smart and safe operation
- Extended connectivity capabilities
- POCT-features

Easy-to-use



- A Start-Up Wizard leads the operator through the user-defined settings upon first start of the device.
- Automatic start of the measurement after placing the urine test strip allows hygienic and clean operation of the analyzer
- Positive results, reminders and warnings are shown in color (e.g. red or yellow) and can be easily identified
- The user interface offers a high level of customization with flexible testing and reporting options



CombiScreen® DIP Check

Catalog No. 93010 2 x 15 mL Lot No. Y 686 Expiry 2025/05 

Analyte	Analyticon CombiScreen® Urine Test Strips		Instrumental (Analyticon CombiScan® / Urilizer®)	
	Level 1	Level 2	Level 1	Level 2
Ascorbic Acid	Negative	Negative	Negative - 20 mg/dl Negative - 1+	Negative - 20 mg/dl Negative - 1+
Bilirubin	Negative	1+ - 3+	Negative	1+ - 3+
Blood	Negative (*)	10 - 300 Ery/s 1+ - 3+	Negative (*)	10 - 300 Ery/s 1+ - 3+
Glucose	Normal	30 - 1000 mg/dl 2.8 - 10.0 mmol/l	Normal	30 - 1000 mg/dl 2.8 - 10.0 mmol/l
Ketones	Negative	(-) - 3+	Negative	10 - 300 mg/dl 1.0 - 30 mmol/l (+) - 3+
Leucocytes	Negative	20 - 500 L/eq/L	Negative	20 - 500 L/eq/L 1+ - 3+
Nitrite	Negative (*)	Positive	Negative (*)	Positive
pH	5 - 8	7 - 9	5 - 7	6 - 8
Protein	Negative	30 - 100 mg/dl	Negative	30 - 100 mg/dl 0.3 - 5.0 g/l 1+ - 3+
Specific Gravity	1.020 - 1.030	1.000 - 1.010	1.010 - 1.030	1.000 - 1.030

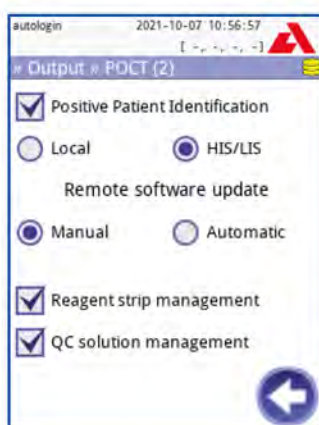
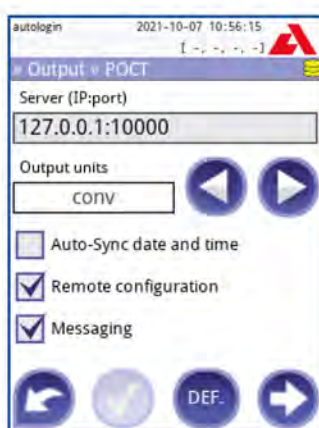
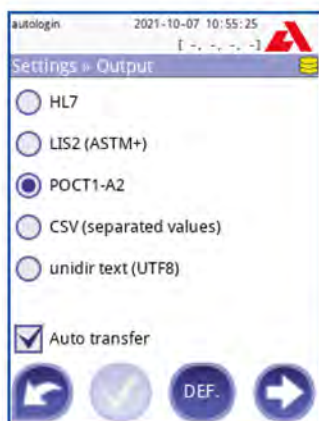
Level 1 (L1)  Level 2 (L2) 

Instrumental (Analyticon CombiScan® / Urilizer®)

Level 1	Level 2
Negative - 20 mg/dl Negative - 1+	Negative - 20 mg/dl Negative - 1+

Smart and safe operation

- Tracking of LOT-No. for urine strips and quality control solutions
- Data management provides multiple filter options
- QC ranges can be entered via QR-Code
- Automated QC analysis with customizable QC test reminders including lockout function
- System allows the allocation of different security levels to individual users



Connectivity capabilities

- Data can be transferred via serial connection or Ethernet
- A variety of interfaces for connecting external barcode scanner and/or keyboard (USB or PS2)
- Implemented protocols: HL7, LIS2 (ASTM+), POCT1-A2



POCT1-A2 features

- Validated for use with Siemens UniPOC™ and POCcelerator™*
- Remote configuration via middleware
- Automated synchronization of date and time via the middleware
- Messaging function allows the POCT datamanager to send messages to addressed operators or instruments
- Positive Patient Identification (PPID)
- Remote software update
- Test strip management
- QC solution management
- Proficiency test feature

* please contact us for other middleware options

Technical Specifications

Type	Semi-automated urine test strip analyzer
Measurement technology	Reflectance photometer with 4 discrete wavelengths 505, 530, 620, 660 nm
Parameters	11 Parameter: Bilirubin, Urobilinogen, Ketones, Ascorbic Acid, Glucose, Protein (Albumin), Blood (Hemoglobin), pH, Nitrite, Leucocytes, Specific Gravity 7 Parameter: Ketones, Glucose, Protein (Albumin), Blood (Hemoglobin), Nitrite, Leucocytes, pH 5 Parameter: Glucose, Protein (Albumin), Blood (Hemoglobin), Nitrite, Leucocytes 2 Parameter: Albumin, Creatinine
Throughput	Up to 50 tests/hour (in normal mode) Up to 120 tests/hour (in fast mode)
Data storage	Patient database: 3.000 tests QC database: 1.000 tests
Display	3.5" QVGA touchscreen LCD
Interfaces	Serial RS232, USB Type A, USB Type B, PS2 (external keyboard, barcode reader), Ethernet
Dimensions	208 x 290 x 80 mm (WxDxH)
Weight	1.2 kg
Power supply	7.5 V DC / 3 A
Operating environment	Temperature: +15°C to +32°C Relative humidity (non-condensing): 30% to 80% Atmospheric pressure: 70 kPa to 106 kPa
Printer	Built-in thermal printer
Barcode reader	External
Protocols	LIS2 (ASTM+), HL7, POCT1-A2
Features	<ul style="list-style-type: none"> • Start-Up Wizard upon first usage • Operator Management with advanced system security options • Test strip & QC Management (full traceability via LOT and Expiry entry) • Data Management, Power Management • Autostart of measurement (automatic strip detection) • Automatic printout or transfer of result • Flexible advanced information entry (e.g. sample color and turbidity) • Flexible advanced testing and reporting options (e.g. sediment recommendation flag)
Laguages	Czech, Danish, English, Finish, French, German, Greek, Hungarian, Italian, Norwegian, Polish, Romanian, Russian, Spanish, Swedish

Art.-No.: UL0100Pro